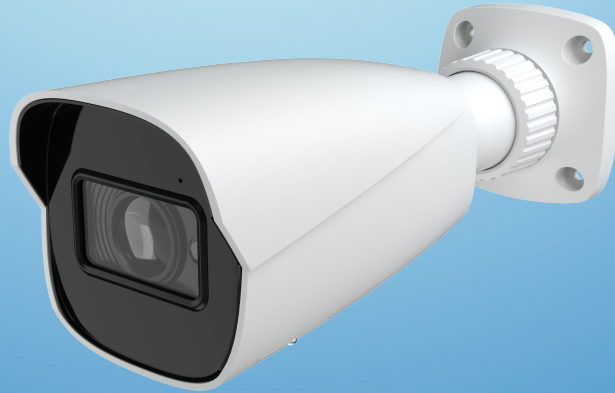


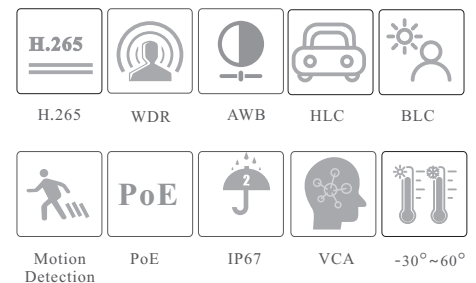
CAMERA

SV-IPHM4602-BV/W

4MP IR Water-proof Bullet
Network Camera



- H.265 /H.264/MJPEG coding
- Max.resolution: 4MP (2560 × 1440)
- ICR auto switch, true day / night vision
- 3D DNR, WDR, HLC, BLC, smart IR, etc.
- ROI coding
- 30~50m IR night view distance
- Built-in micro SD card slot, up to 256GB
- DC12V/PoE power supply
- IP 67 ingress protection
- Support three streams
- Support remote monitoring by smart phones& tablet PCs with iOS and Android OS
- Intelligent analytics

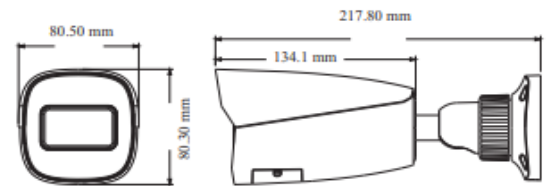


SPECIFICATIONS

Model Specifications	SV-IPHM4602-BV/W			
Camera				
Image Sensor	1 / 3 "CMOS			
Image Size	2560×1440			
Electronic Shutter	1 / 2s ~ 1 / 100000 s			
Iris Type	Fixed Iris			
Min. Illumination	0.005 lux @F1.6, AGC ON; 0 lux with IR			
Lens	2.8~12mm@F1.4,H.FoV: 92°~31°; V.FoV: 48°~17.2°; D.FoV: 112°~35.6°			
Focus	Varifocal (manual/motorized)			
Lens Mount	Ø14			
Day&Night	ICR			
Wide Dynamic Range	120dB			
BLC	Yes			
HLC	Yes			
Defog	No			
Digital NR	Yes			
Angle Adjustment	Pan: 0°~360°; Tilt:0°~90°;Rotation: 0°~360°			
Image				
Video Compression	Main stream: H.265 / H.264 Sub/third stream: H.265 /H.264 / MJPEG			
H.265 Compression Standard	Main Profile@Leve4.1 High Tier			
Resolution	4MP (2560 × 1440), 3MP (2304 × 1296), 1080P (1920 × 1080), 720P (1280 × 720), D1, 480 × 240, CIF			
Main Stream	60Hz: 4MP/3MP/1080P/720P(1~30fps); 50Hz: 4MP/3MP/1080P/720P(1~25fps)			
Sub Stream	60Hz: 720P/D1/CIF (1~30fps);50Hz: 720P/D1/CIF (1~25fps)			
Third Stream	60Hz: D1/480×240/CIF (1~30fps);50Hz: D1/480×240/CIF(1~25fps)			
Bit Rate	64 Kbps ~ 8 Mbps			
Bit Rate Type	VBR / CBR			
Image Settings	ROI, Saturation, Brightness, Hue, Contrast, Wide Dynamic, Sharpness, Image Mirror, Image Flip, NR, etc. adjustable through client software or web browser			
ROI	Each ROI to be configured separately			
Interfaces				
Network	RJ45			
Video Output	No			
Audio	1CH audio input			
Storage	Built-in micro SD card slot, up to 256GB			
Reset	Yes			
DORI Distance				
Lens	Detect	Observe	Recognize	Identify
2.8~12mm(W)	63.99m(209.94ft)	25.60m(83.98ft)	12.80m(41.99ft)	6.40m(20.99ft)
2.8~12mm(T)	188.65m(618.93ft)	75.46m(247.57ft)	37.73m(123.78ft)	18.86m(61.87ft)
Functions				
Remote Monitoring	Web browser / NVR/NVMS2.X/Mobile APP			
Web Browser	IE (plug-in required)/Google Chrome/Edge/Firefox/Safari			
Online Connection	Support simultaneous monitoring for up to 3 users; Support multi-stream real time transmission			
Network Protocol	UDP, IPv4, IPv6, DHCP, NTP, RTSP, RTP, RTCP, PPPoE, DDNS, SMTP, FTP, 802.1x, SNMP, UPnP, HTTP, HTTPS, QoS			
Interface Protocol	ONVIF			
Storage	Network remote storage; micro SD card storage			
Smart Alarm	Motion detection, SD card full, SD card error			

Smart Event	Video Exception (scene change, video blur and video cast detection), line crossing detection and region intrusion detection
General Function	Watermark, IP address filtering, video mask, heartbeat, illegal login lock, corridor pattern
PoE	Yes
IR Distance	30 ~ 50 m
Ingress Protection	IP67
Others	
Power Supply	DC12V/PoE
Power Consumption	< 8W
Operating Environment	- 30 °C ~ 60 °C (-22°F~140°F);Humidity: less than 95 % (non-condensing)
Storage Environment	- 30 °C ~ 65°C (-22°F~149°F), Humidity: less than 95 % (non-condensing)
Dimensions (mm)	218.1 × 79.5 × 70.4
Weight (net)	Approx. 0.67KG
Installation	Ceiling mounting; Wall mounting
Certificate	CE, FCC
Environmental Protection	Complies with Directive EU RoHS, WEEE(2012/19/EU), directive 94/62/EC and REACH(EC1907/2006)

DIMENSIONS



AVAILABLE ACCESSORIES



AVAILABLE MODEL

Available Model	SV-IPHM4602-BV/W
-----------------	------------------