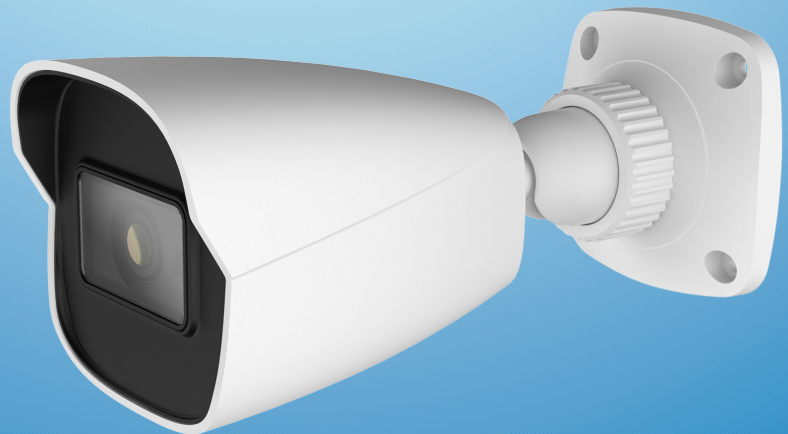


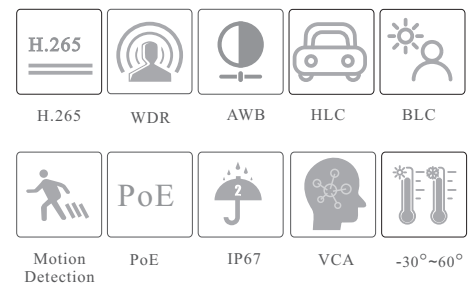
SV-IPHM5201-BF/W

CAMERA

5MP IR Water-proof Bullet Network Camera



- H.265+ /H.265 /H.264+/H.264/MJPEG coding
- Max.resolution: 5MP (2880 × 1620)
- ICR auto switch, true day / night vision
- 3D DNR, WDR, HLC, BLC, smart IR, etc.
- ROI coding
- 20~30m IR night view distance
- Built-in micro SD card slot, up to 256GB
- DC12V/PoE power supply
- IP 67 ingress protection
- Support three streams
- Support remote monitoring by smart phones& tablet PCs with iOS and Android OS
- Intelligent analytics



SV-IPHM5201-BF/W

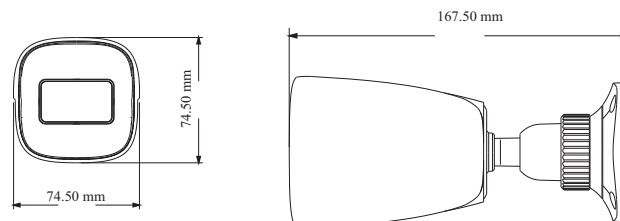
5MP IR Water-proof Bullet Network Camera

SPECIFICATIONS

Specifications	Model	SV-IPHM5201-BF/W		
Camera				
Image Sensor	1 / 2.7 "CMOS			
Image Size	2880×1620			
Electronic Shutter	1 / 1s ~ 1 / 100000s			
Iris Type	Fixed Iris			
Min. Illumination	0.007 lux @F1.6, AGC ON; 0 lux with IR			
Lens	2.8mm@F1.6, Horizontal FoV:110.5°;Vertical FoV:57°; Diagonal FoV:131° 3.6mm@F1.6, Horizontal FoV:91.5°;Vertical FoV:49.5°; Diagonal FoV:107°			
Focus	Fixed			
Lens Mount	M12			
Day&Night	ICR			
Wide Dynamic Range	120dB			
BLC	Yes			
HLC	Yes			
Digital NR	Yes			
Angle Adjustment	Pan: 0°~360°; Tilt:0°~80°;Rotation: 0°~360°			
Image				
Video Compression	Main stream: H.265+ / H.265 / H.264+ / H.264 Sub stream: H.265+ / H.265 / H.264+ / H.264 / MJPEG Third stream: H.265+ / H.265 / H.264+ / H.264 / MJPEG			
H.265 Compression Standard	Main Profile@Leve4.1 High Tier			
Resolution	5MP (2880 × 1620), 4MP (2560 × 1440), 3MP (2304 × 1296), 1080P (1920 × 1080), 720P (1280 × 720), D1, 480 × 240, CIF			
Main Stream	60Hz: 5MP(1~20fps)/4MP/3MP/1080P/720P(1~30fps); 50Hz: 5MP(1~20fps)/4MP/3MP/1080P/720P(1~25fps)			
Sub Stream	60Hz: 720P/D1/ CIF (1~30fps);50Hz: 720P/D1/ CIF (1~25fps)			
Third Stream	60Hz: D1/480 × 240/CIF (1~30fps);50Hz: D1/480 × 240/CIF(1~25fps)			
Bit Rate	64 Kbps ~ 8 Mbps			
Bit Rate Type	VBR / CBR			
Image Settings	ROI, Saturation, Brightness, Hue, Contrast, Wide Dynamic, Sharpness, Image Mirror, Image Flip, NR, etc. adjustable through client software or web browser			
ROI	Each ROI to be configured separately			
Functions				
Remote Monitoring	Web browser / NVR/NVMS2.X/Mobile APP			
Web Browser	IE (plug-in required)/Google Chrome/Edge/Firefox/Safari			
Online Connection	Support simultaneous monitoring for up to 10 users; Support multi-stream real time transmission			
Network Protocol	UDP, IPv4, IPv6, DHCP, NTP, RTSP, RTP, RTCP, PPPoE, DDNS, SMTP, FTP, 802.1x, SNMP, UPnP, RTMP, HTTP, HTTPS, QoS			
Interface Protocol	ONVIF			
Storage	Network remote storage; micro SD card storage			
Smart Alarm	Motion detection, SD card full, SD card error			
Smart Event	Video Exception (scene change, video blur and video cast detection), line crossing detection, region intrusion detection, abandoned/missing object detection			
General Function	Watermark, IP address filtering, video mask, heartbeat, illegal login lock, corridor pattern			
PoE	Yes			
IR Distance	20 ~ 30 m			
Ingress Protection	IP67			
DORI Distance				
Lens	Detect	Observe	Recognize	Identify
2.8mm	59.67m(195.76ft)	23.87m(78.31ft)	11.93m(39.14ft)	5.97m(19.58ft)
3.6mm	71.10m(233.26ft)	28.44m(93.30ft)	14.22m(46.65ft)	7.11m(23.32ft)
Interfaces				
Network	RJ45			

Video Output	No
Audio	1CH audio input; 1CH built-in MIC
Storage	Built-in micro SD card slot, up to 256GB
Reset	Yes
Others	
Power Supply	DC12V/PoE
Power Consumption	< 6W
Operating Environment	- 30 °C ~ 60 °C (-22°F~140°F);Humidity: less than 95 % (non-condensing)
Storage Environment	- 30 °C ~ 65°C (-22°F~149°F), Humidity: less than 95 % (non-condensing)
Dimensions (mm)	167.5 × 74.5 × 74.5
Weight (net)	Approx. 0.38KG
Installation	Ceiling mounting; Wall mounting
Certificate	CE, FCC
Environmental Protection	Complies with Directive EU RoHS, WEEE(2012/19/EU) , directive 94/62/EC and REACH(EC1907/2006)

DIMENSIONS



AVAILABLE ACCESSORIES



AVAILABLE MODEL

Available Model	SV-IPHM5201-BF/W
-----------------	------------------