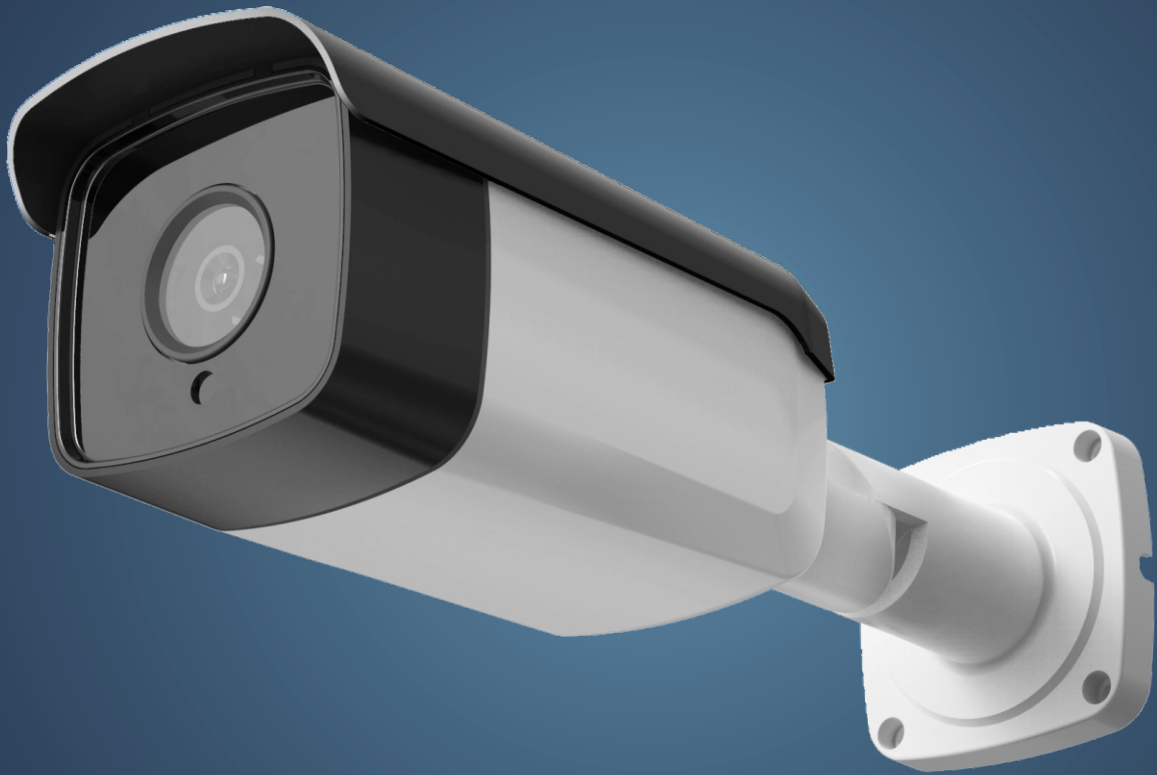


*Sky*vision



SV-TVL2805-BF

FEATURES

- Weatherproof IR Camera
- 3.6mm fixed lens
- 4PCS Array IR, Max. Range 60M
- High speed, long distance real-time transmission
- DC12V

SV-TVL2805-BF

SPECIFICATIONS

Model	SV-TVL2805-BF
Image Sensor	1/2.9" 1080P COMS Sensor
DSP	FH8536H
Scanning System	Progressive
Resolution	1080P
Effective pixels	2.0M(1920H*1080V)
TV System	PAL/NTSC
Electronic Shutter	Auto/1/50(1/60)- 1/50,000sec
Sync System	Internal
Min. Illumination	0.1LUX
Video output	AHD/TVI/CVI/CVBS
S/N	≥50dB
Gamma correction	0.45
Focus Length	3.6mm
Auto Iris Support	NO
IR LED	4 pcs Array IR
IR Distance	60M
AES	Yes
AGC	Yes
D&N	Ext (default) /Auto / Color / B&W(OSD control)
BLC	Auto
DNR	3DNR
DWDR	Support
OSD	Support
Flicker less	ON / OFF
Weatherproof Housing	Metal IP66
Electrical protection	Yes
Working temperature	-10°C~50°C
Storage temperature	-30°C~60°C
Humidity	20%~90%
Operating voltage	12VDC